



Off the Shelf

2023 Annual Report



Access to and Awareness of Healthy Food for All



Director's Dish

Pam Molitoris
Executive Director

My siblings and I were raised in rural Illinois, where my parents often knew what we had done, good or bad, before we even got home. I spent most of my childhood waiting for the day that I could move away to the city. For the day that I could live my own life without the interference of others. Very naïve, I know!

The day finally came, my chance to live in the city. My husband landed a job in San Jose, California and for a few years we maintained two households. It was the best of both worlds. I could be anonymous when I wanted, but also be part of a longstanding community when I felt that urge. When it came time to decide whether to stay or move, we ultimately decided to stay in our home just north of Springfield.

Our decision was rooted in the knowledge that our community was behind us and ready and willing to support us through the good and the bad times. There is no doubt that we could have built a sense of community in California as well, but what we had

here was a history, one that could take years to recreate.

After nearly 40 years of working in central and southern Illinois, I continue to be amazed at how our communities come together each day. From cheering on our kids in their sports and school activities, to standing outside to talk with neighbors during the height of COVID, to checking on each other after a mid-west storm, to working together to feed those who couldn't afford a holiday meal, the warmth of our communities shows.

Over the years, I've also learned that one must contribute to a community to truly be part of it. Whether that is through volunteering, providing expertise, providing resources, or connecting people, it is the way we build strong communities for the benefit of all. Today, I thank you for being part of our community, for standing together to move us closer to our vision of providing access to and awareness of healthy food for all.

Pam Molitoris

Community Partnerships at Work

Great things happen when people work together. This year has been filled with support from our community to uplift our neighbors facing hunger. To address a 40% increase in need (U.S. Department of Agriculture, Household Food Security in the United States in 2022), the Foodbank has worked with many great partners throughout the year.

During the holiday season, the Foodbank's mobile distributions served thousands of families with the help of **Friend-in-Deed, Sysco, Blue Cross and Blue Shield of Illinois**, and our dedicated volunteers. **Steve and Jodie Koch**, longtime friends of the Foodbank, sponsored Thanksgiving and Christmas meals for seniors in our community and volunteered their time to deliver them personally, with the help of **Arena Food Service**.



Steve and Jodie Koch delivering meals to seniors in Springfield, IL.



Friend-in-Deed volunteers distribute Thanksgiving boxes for the holidays.

Our Food Focus in Rural Illinois



The Midwest is a culturally rich region, known for its agricultural prosperity. However, pockets of poverty in the rural Midwest are widespread, and central and southern Illinois are no exceptions. Rural communities face unique challenges, and often find themselves marginalized in national discussions about hunger. One of our goals at Central Illinois Foodbank is to spread awareness and develop creative solutions for food insecurity in this predominantly rural, and at times overlooked region.

Central Illinois Foodbank's service area encompasses the rural prairieland of the Midwest. Green, Menard, Macoupin, Schuyler, Cass, and Fayette County are just a few examples of rural counties in which the Foodbank serves, and our staff and volunteers have seen firsthand the effect providing additional resources has on these areas.

"When the Foodbank hosts a mobile distribution, people really turn out," says Program Manager **Wesley Ridgeway**, who has worked directly with these rural areas for years. When working in this region, because the agencies and resources are limited, local agencies come together with an outpouring of support for their community when there is an opportunity to do more.

In August, the Foodbank partnered with the **Cass County Health Department** to host a mobile distribution in Beardstown: a small town located along the Illinois River, known for its history in the meatpacking industry and diverse community. With a Hispanic population of nearly 40%, Beardstown has one of the largest percentages of Spanish-speaking communities across central and southern Illinois (United States Census Bureau, QuickFacts, Beardstown city, Illinois).

Spanish-speaking only families in the Midwest face a language barrier

that can make it harder to access healthy and nutritious food. These families rely on local organizations, like the Cass County Health Department, to help bridge the gap and stand as a liaison to work with outside organizations with additional resources. Thanks to the support of the Cass County Health Department, the Foodbank was able to host a distribution that served hundreds of families nearly 10,000 pounds of food.

Menard County, another dominantly rural county in the Foodbank's service area, is home to the **Menard County Food Pantry**, who has been feeding their neighbors for over 30 years. The Menard County Food Pantry, who has seen an increase in need, developed a task force to help their community. After reaching out to Central Illinois Foodbank, we were able to provide them with a new commercial cooler to provide refrigerated items.

"Now we can provide things like milk, cheese or anything that has to be refrigerated..." says Cindy, a Menard County Food Pantry Board Member who is excited to see this cooler provide more food options to their neighbors. In addition to frozen and shelf-stable foods, Menard County Food Pantry is now able to offer fresh produce, dairy, protein, and other household staples for their community. In areas where grocery stores are scarce and access to nutritious foods are limited, a new cooler for a small town pantry can make a world of difference.

The rural Midwest is a testament to the strength of community bonds, where residents support each other through thick and thin. In this close-knit environment, the Foodbank is honored to play an important role in fostering this spirit of inclusivity, respect, and accessibility. From mobile distributions to new coolers, our partners will always find a way to

show up for their neighbors. The resilience of the rural Midwest community shines brightly, showcasing the power of unity.



Cass County Health Department employee and translator, Olidia Montoya, passes out Blue Cross and Blue Shield of Illinois healthy food boxes at the Beardstown mobile distribution.



Two Men and a Truck deliver new commercial cooler to the Menard County Food Pantry (Pictured: Cindy Godbey, Menard County Food Pantry Board Member)

SPOTLIGHT ON HUNGER: GREENVIEW'S BULLDOG BACKPACK PROGRAM



“The next grocery store is twenty miles away, and for those who don’t have a lot of money, 20 miles might as well be 200 miles,” says **Superintendent Ryan Weavner**, one of the many local leaders devastated by COVID-19’s effects on the community, determined to do more to help feed their neighbors.

Superintendent Weavner urges schools of rural communities to think outside of the box, since many rural areas lack community organizations to develop resources. For communities like Greenview, the school is the heartbeat of the community.

In 2021, the Greenview community launched the Bulldog backpack program, which ended up being so successful that they expanded the program to include a community pickup for all families. “Each month about 94 vehicles come through... and, on average, we serve 150 families per pickup,” Superintendent Weavner described, as he reflected on the impact these distributions have had on the community.

With a population of 745, the Greenview community is small but mighty. Superintendent Weavner describes Greenview as a town of people who are both caring and accepting. From the Superintendent to the sports teams, everyone pitches in to take care of their community.



VOLUNTEER SPOTLIGHT: DERREL DAVIS

Derrel dedicates his morning every day to the Foodbank. As a longtime volunteer, he has been involved in all kinds of volunteer work, from sorting donations at the warehouse to delivering food across rural Illinois. When asked about his time volunteering across our service area, Derrel told us about his personal experience living in the rural Midwest. “I grew up in a small town, and I saw (families struggling) all the time... I don’t remember any really well-organized program trying to help those people,” Derrel explained, continuing on to say how it is nice to see organizations like the Foodbank now providing that support.

Derrel also expressed his appreciation for the Foodbank’s flexibility over the years and how we’ve adapted to the environment. “You have to be flexible... things like COVID come along and you’ve got to do it a different way. The important thing is to get the product out and get it into the hands of the people who really need it.”



HOW WE SERVE OUR NEIGHBORS

Our fleet of three vans and four trucks delivered **millions of lbs of food across 21 counties**



Our volunteers contributed over **6,000 hours** toward packing, delivering, and distributing food



Over 140 partner agencies helped us in our work to distribute food to our neighbors



FY23 STATEMENT OF ACTIVITIES

Year Ended May 31, 2023

Revenues and Other Support Revenues

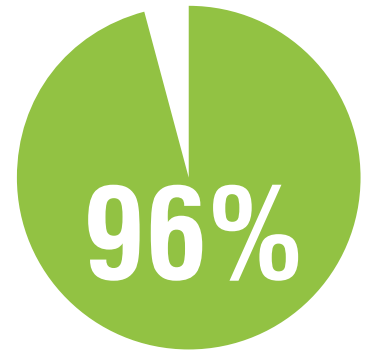
Program Service Fees	\$ 1,484,559
Grants & Contracts	\$ 1,058,973
Contributions	\$ 2,452,757
Contributed Food Received	\$ 12,258,390
Interest	\$ 55,935
Other	\$ 17,208
Unrealized loss on investments	\$ (69,693)
Total Revenues & Other Support	\$ 17,258,129

Expenses

Foodbank Operations	\$ 3,326,297
Contributed Food Distributed	\$ 12,374,830
Administrative & Fundraising	\$ 703,428
Depreciation	\$ 324,220
Total Expenses	\$ 16,728,775

Change in Net Assets without Donor Restrictions	\$ 635,503
Change in Net Assets with Donor Restrictions	\$ (106,149)
Total Change in Net Assets	\$ 529,354

Net Assets at Beginning of Year	\$ 12,401,523
Net Assets at End of Year	\$ 12,930,877



Thanks to the combined impact of donated food and funds, 96% of the Foodbank's expenses directly support programs that feed people.

**\$1.00 =
6 meals**

Every dollar you donated helped provide the equivalent of six meals.



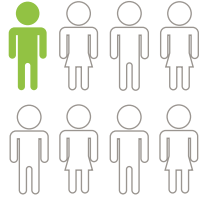
Board members join Foodbank staff for a group photo to celebrate Hunger Action Month

BOARD OF DIRECTORS

Robbie Robert • President
Jake Saladino • Treasurer
Christine Novaria • Secretary

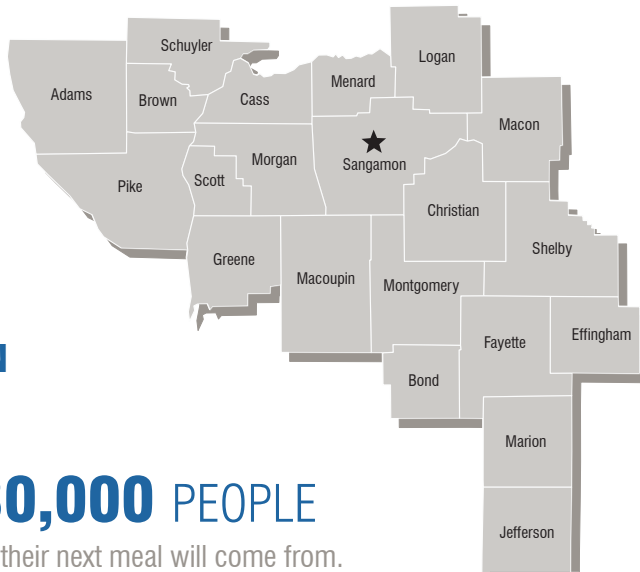
John Faloon
 Darren Epperson
 Matthew Trapp
 Sarah Enlow
 Erin Bromley
 Terra Curtis-Trumbo
 Joshua Johnson
 Tiffany Penley
 Felicia Burton

IN OUR 21 COUNTY SERVICE AREA

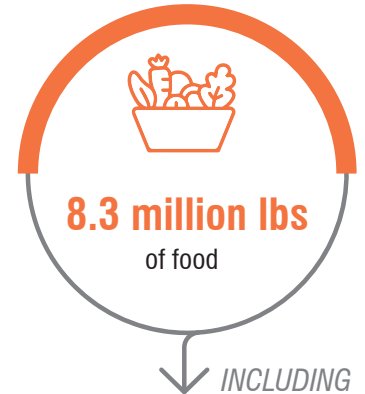


1 IN 8 CHILDREN
struggles with hunger.

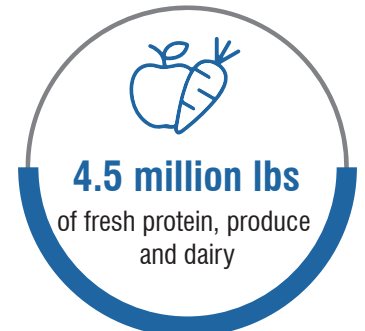
NEARLY 80,000 PEOPLE
don't know where their next meal will come from.



LAST YEAR WE DISTRIBUTED



INCLUDING



PROVIDING



Leave your
Legacy

To learn more about planned giving, reach out to **Chloe Lucca** at 217-522-4022 ext. 226 or clucca@centralilfoodbank.org

STAFF

Pam Molitoris • Executive Director
Jane Kiel • Finance Director
Kevin Mackiney • Operations Director
Chloe Lucca • Development Director
Wes Ridgeway • Program Manager
Karleen Langhein • Food Sourcing Manager
Brooke Dunn • Public Relations Manager
Trent Rossi • Program Coordinator
Meghan Allen • Program Coordinator
Darren Farley • Sort Room Supervisor
Darryll Kelly • Lead Warehouse Worker
Jenny Knuth • Accounting Assistant
Tori Rogers • Operations Assistant
Michelle Collins • Administrative Assistant



/CentralILFoodbank

@CentralILFoodbk

/CentralILFoodbank

@CentralILFoodbank

1937 East Cook Street • Springfield, IL 62703
217-522-4022 • Fax 217-522-6418

centralilfoodbank.org